

PREMIUM HD COLOR DOPPLER ULTRASOUND SYSTEM



SIMPLE AND CONFIDENT DIAGNOSIS, THROUGH IMPROVED EFFICIENCY



19/17" Display Monitor



Independent probe and cable management



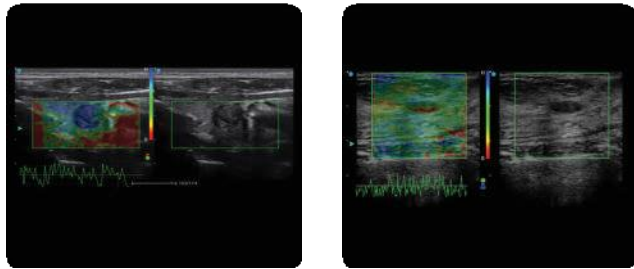
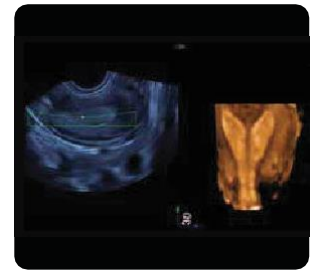
Intuitive Keyboard



Four active transducer connectors

Advanced 4D experience in OB/GYN

The system supports both abdominal and transvaginal volumetric probes to realize 3D/4D imaging in OB/GYN application, providing more detailed and complete volumetric information to assist the observation and diagnosis of fetus wellness and uterus health

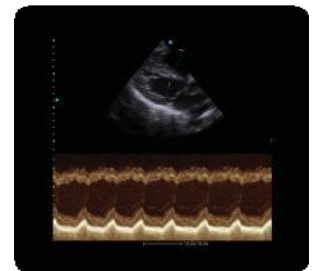
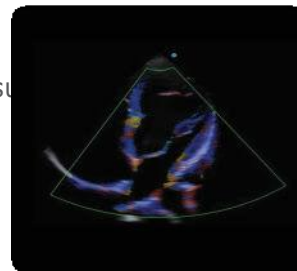


Smart Elastography

The system supports elastography Imaging. By delivering an external compression on the tissues; the system is able to visualize the stiffness of tissues in real time. With this smart Elastography technology, the doctors can be more convinced in early detection of latent disease.

Advanced Cardiac FUNCTIONS

CD25 pro is equipped with the advance cardiac functions colour tissue doppler & pulse wave doppler. TDI helps in the assessment of cardiac muscle movements. Addition to this, the system provides AMM mode with three M line cursors; with 360 rotation. This powerful AMM assists to provide exact analysis of cardiac structure movement even in difficult heart positioning.

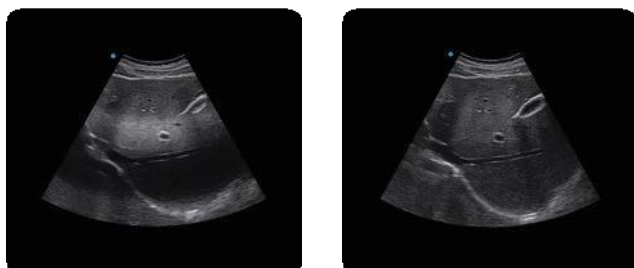


AUTO fit

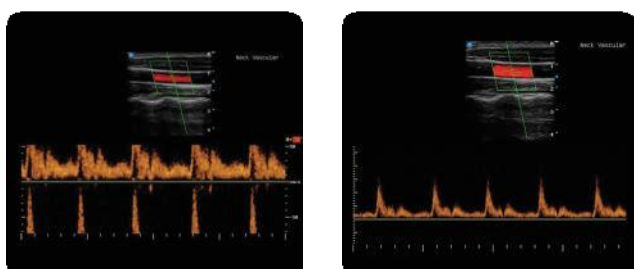
(One touch optimization)

One button optimization function adjusts TGC and B gain in B mode as well as base line, PRF and PW gain in PW mode to realize the best B/W image and PW image.

B Mode



PW mode



Before

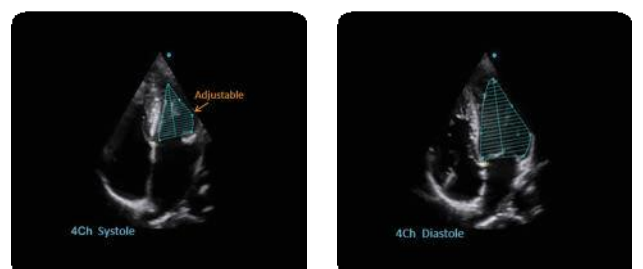
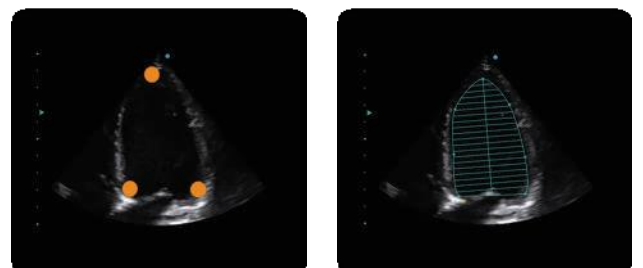
After

AUTO EF

(Automatic measurement of Ejection Fraction)

By setting 3 points of the left-ventricle (systole-diastole), system can automatically track the edge of myocardium, calculate the LV volume and output function.

Output Function.



Left-ventricle Auto EF

Technical Specifications: CD25 PRO

Imaging Mode	B, B/B, 4B, B/M, M, B/D, THI, Color Doppler Imaging, Power Doppler Imaging, Directional Doppler, PW/ CW Doppler, Duplex, Triplex, Color M, Anatomical M Mode, TDI, Panoramic Imaging, 4D Imaging, Auto IMT Calculations
Scanning Mode	Electronic Convex / Linear / Phased Array / Volume
Gray Scale	256
Display	19/17" Display Monitor
Probe FREQUENCY	2 - 15 Mhz (Probe dependent)
Probe Connector	4 live probe connectors
Gain Control	Overall Gain Control, 8 - Step TGC continuously adjustable
Image Magnification	Full Screen Zoom, HD Zoom
Cine Loop	More than 2,000 frames (Probe and Mode Dependent)
Image Storage	Minimum 500 GB Hard Disk for inbuilt Digital Image Storage, CD/DVD Drive
Connectivity	4 USB, DICOM 3.0, S-Video, VGA,
System Upgrade	Flexible System upgrade through software
Clinical Application	Abdominal, Vascular, Thyroid, Obs/Gyn, MSK, Adult/Pediatric Cardiac, Urology, Pediatrics, Neonatal Head, Small parts, Transcranial etc.
Probes	Convex / Linear / Micro Convex / Phased Array / Trans Vaginal / Transrectal / Volume Convex, Volume TVS Probe
Advance FEATURES	Trapezoid Imaging, Nanoview, Auto-fit, XBeam, MFI, Free Hand 3D, IMT Auto Measurement, Smarchive, ECG Module, VS Flow, Panoramic, 4D Pro + 4D Lite, CW, Anatomic M, Color M, TDI, DICOM 3.0

Broadband Probes

■ C3L60C
Convex Probe
2.0 - 5.0 Mhz



■ L8L38C
Linear Probe
5.0 - 12Mhz



■ P3F14C
Adult Phased
Array Probe
1.7 - 4.0 Mhz



■ C3I20C
Volume TVS Probe
4.0 - 9.0 Mhz



■ V6L11C
Trans Vaginal Probe
4.0 - 9.0 Mhz



■ C5L40C
Volume Convex Probe
4.0 - 7.0 Mhz

